

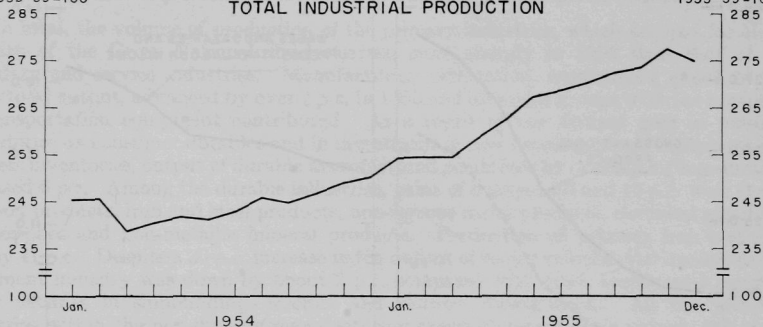
THE RISE IN INDUSTRIAL PRODUCTION IN 1955 WAS WIDESPREAD, WITH MAJOR GAINS IN DURABLE GOODS MANUFACTURING AND IN MINING

VOLUME INDEX  
1935-39=100

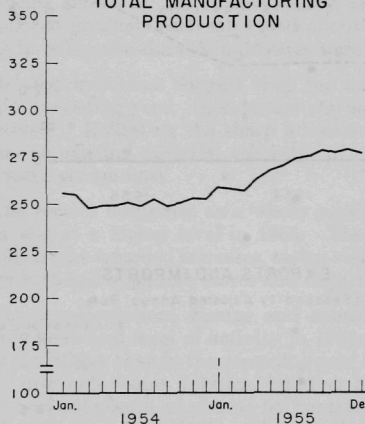
(Seasonally Adjusted)

VOLUME INDEX  
1935-39=100

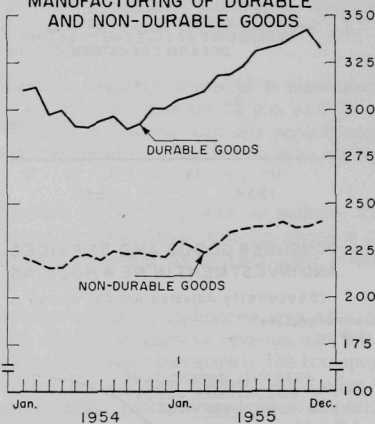
TOTAL INDUSTRIAL PRODUCTION



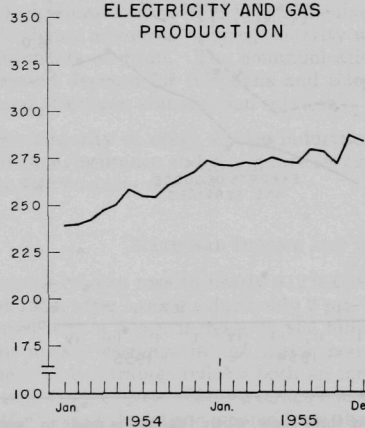
TOTAL MANUFACTURING PRODUCTION



MANUFACTURING OF DURABLE AND NON-DURABLE GOODS



ELECTRICITY AND GAS PRODUCTION



MINING PRODUCTION

