

FLORA AND FAUNA.

caribou and one or other of the true deer are now found in, or in recent

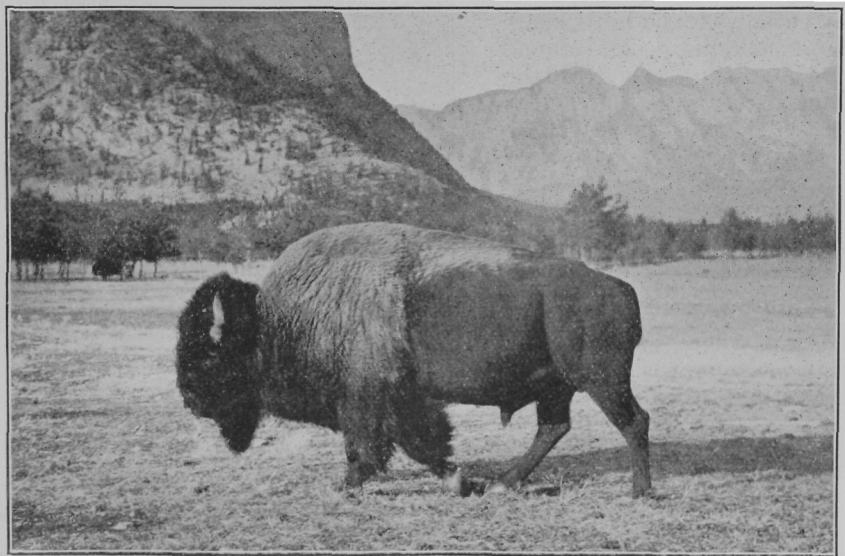


RED DEER IN WAINWRIGHT PARK, ALBERTA.

times ranged over nearly the whole region, and it is in this zone that the black bear, beaver, otter, marten, mink, ermine and fox are found in the greatest abundance. Grouse may be seen anywhere, and the lakes and streams teem with food fishes.

Transition Zone.—What is here called the Transition zone is so varied in character that it must be dealt with more in detail. The litoral flora of the Atlantic coast is almost identical with that of the Pacific coast; but the plants of the forest are widely different, although it should be noted that many species found on the mountains of Gaspé also

occur in British Columbia. From Prince Edward Island to Lake Huron the Transition zone includes all the so-called "hardwoods," beech, maple,



BUFFALO BULL IN ROCKY MOUNTAINS PARK, BANFF, ALBERTA.